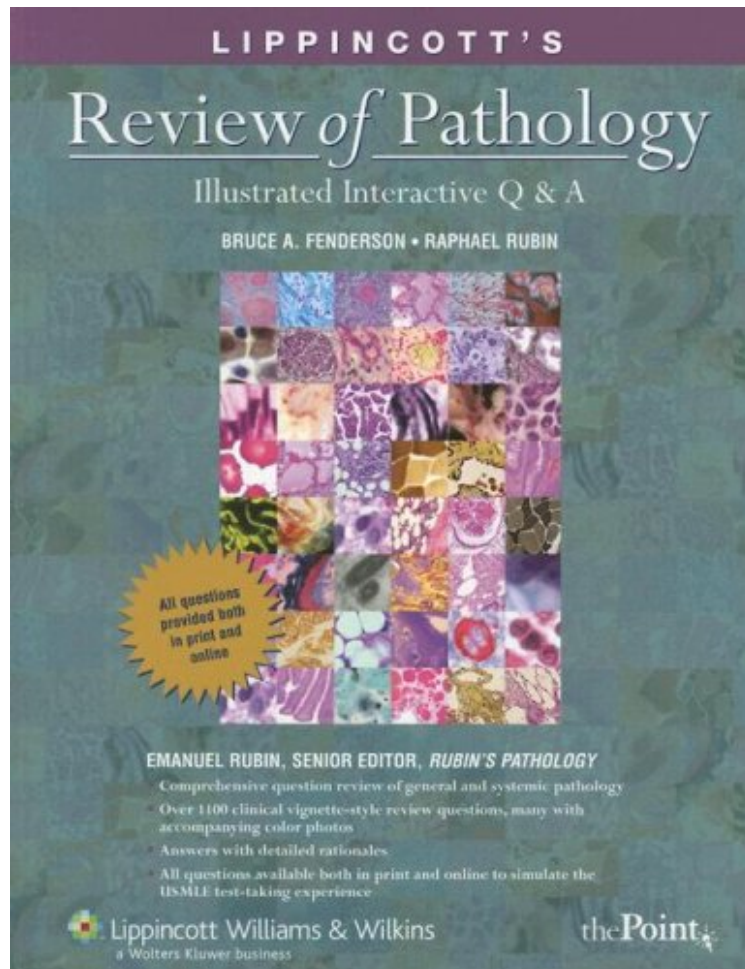


(Download) Lippincott's Review of Pathology: Illustrated Interactive Q A

Lippincott's Review of Pathology: Illustrated Interactive Q A

Bruce Fenderson, Raphael Rubin MD

**Download PDF | ePub | DOC | audiobook | ebooks*



[Download](#)

[Read Online](#)

#2146550 in Books Lippincott Williams Wilkins 2006-08-14 Ingredients: Example Ingredients Original language: English PDF # 1 .49 x 8.44 x 10.901, 1.66 #File Name: 078179580X336 pages | File size: 45.Mb

Bruce Fenderson, Raphael Rubin MD : Lippincott's Review of Pathology: Illustrated Interactive Q A before purchasing it in order to gage whether or not it would be worth my time, and all praised Lippincott's Review of Pathology: Illustrated Interactive Q A:

0 of 0 people found the following review helpful. Don't waste your moneyBy Khalil SharifBook is terrible and not helpful for challenging exams. Provides the basic info that your teachers and professors won't ask. If you go to a challenging medical school don't buy. If your tests are straight forward maybe it's a good buy.0 of 0 people found the following review helpful. PERFECT STUDY TOOL!!!By BryttThis book is the perfect study tool. it provides case studies and the answers and the reason for the answer!0 of 1 people found the following review helpful. Plenty of questions but not good explanationsBy Thomas EdisonThere are a lot of questions but this book does a poor job of explaining mechanisms/reasons for why the wrong answers are wrong.

Featuring over 1,100 multiple-choice, clinical vignette-style questions, this QA book provides the most up-to-date, clinically relevant review of pathology. It helps medical students master the vast amount of pathology information they need to succeed on the USMLE, and serves as an excellent review tool for students in other health professions. Using the format of the National Board of Medical Examiners, the questions address the general and systemic pathology topics detailed in the highly-acclaimed textbook Rubin's Pathology: Clinicopathologic Foundations of Medicine. Correct and incorrect answers are explained in detailed rationales linked to clinical vignettes. Over 300 full-color images link clinical and pathologic findings. To give students practice for the computer-generated USMLE, the questions are also available online on our Connection Website.

-- "I think the major benefit of Lippincott's of Pathology is that the questions have a more clinical focus...This is very similar to the actual USMLE."-Shilpa Shah, Fourth-year medical student, UMDNJ, Newark, New Jersey -- "The questions cover all the major topics and allow students to review information from different perspectives...The questions are appropriately written for second-year medical students taking their pathology course and preparing for the boards."-Gopika Banker, Resident, Kennedy Memorial Hospital